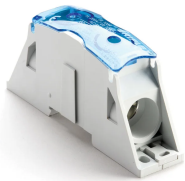


# Strömterminal, kabel-kabel, 230 A IEC, aluminium

## Data Solutions

### KATALOGNUMMER

### SB160AL



nVent ERIFLEX Power Blocks are the main DIN mounted output/input devices for connection between primary and secondary switchboard, or main input/output connection for machine or industrial equipment (such as inverter, air conditioning machines, etc.). The high short circuit rated large cross section blocks offer time savings and reliability in every panel configuration. The complete Power Blocks range offers multiple connection types with up to four cables, nVent ERIFLEX Flexibar Advanced, or IBSB Advanced power braids.

### CERTIFIERINGAR



### DESIGN

Uppfyller RoHS

Halogenfri

Can be connected with round cross section cable or flat connection system like nVent ERIFLEX Flexibar Advanced or IBSB Advanced Insulated Braided Conductor

Compact power block with high short circuit current rating

Tinned copper or aluminum block allows for copper or aluminum conductor direct connections, or using ferrule

Screw retaining cover is hinged and removable

Design allows for visual inspection of conductor and confirmation of connection

Modular snap-together blocks for building multi-pole power blocks

Easily clips onto DIN rail or mounts to panel with screws

Voltage detection and measurement connection

95% fill ratio

Conforms to EN 45545 obtaining an HL3 classification for chapter R23 and HL2 classification for chapter R22

## PRODUKTATTRIBUT

---

Artikelnummer: 561162

Yta: Förtentat

Typ: Kabel-till-kabel

Märkström vid vanlig tillämpning, IEC: 230A

Material: Aluminium; Termoplast

Max. ledarstorlek för ledningssida, IEC: 70 mm<sup>2</sup>

Max. ledarstorlek för belastningssida, IEC: 70 mm<sup>2</sup>

Kortsiktig hållström (I<sub>cw</sub>) 1s: 14.4kA

Max. märkström, IEC: 230A

Max. märkström, UL/CSA: 200A

Maximal kortslutningsström (I<sub>pk</sub>): 42kA

Nominell kortslutningsmärkström (I<sub>cc</sub>): 20kA

Kortslutningsströmsvärde (SCCR): 100kA

Max. arbetsspänning, IEC (U<sub>i</sub>): 1000; 1500

Max. arbetsspänning, UL (V<sub>in</sub>): 1000

Antal anslutningar på ledningssida: 1

Compact i flertrådsstorlek för ledningssida: 35–70 mm<sup>2</sup>; #2 - 3/0

Compact i flertrådsstorlek för belastningssida: 35–70 mm<sup>2</sup>; #2 - 3/0

Antal anslutningar på belastningssida: 1

Flertrådsstorlek för belastningssida – hylsa: 35–70 mm<sup>2</sup>

Djup (D): 55mm

Höjd (H): 111mm

Bredd (W): 27.7mm

Enhetsvikt: 0.1kg

Certifieringsinformation: UL® 1059

Uppfyller: IEC® 60947-7-1

Kapslingsklass: IP20

Brandklassning: UL® 94V-0

## YTTERLIGARE PRODUKTINFORMATION

---

SBF250 is UL® 1953 Listed when used with SB250SPCR. Max Working Voltage for UL 1953 applications is 1250 VAC/DC.

Blue protection cover is less than 7% of the overall product weight.

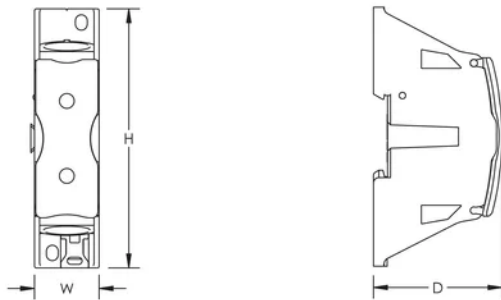
### Design Guideline for Distribution Blocks, Power Blocks and Power Terminals

Derating according to Ambient\* Temperature (°C) to maintain working temperature of 85°C

Ambient Temperature (°C)	30°	35°	40°	45°	50°	55°	60°	65°	70°	75°
Derating Coefficient (d)	1	1	1	0.94	0.88	0.82	0.75	0.67	0.58	0.47

\*environment around the terminal blocks inside the enclosure

## DIAGRAMS



## VARNING

nVent produkter ska installeras och användas endast så som anges i nVents bruksanvisning och utbildningsmaterial. Bruksanvisningar är tillgängliga på [www.nvent.com](http://www.nvent.com) och från din nVent kundtjänstrepresentant. Felaktig installation, missbruk, felapplicering eller annan brist i att helt följa nVents instruktioner och varningar kan orsaka att produkten brister, egendomsskador, allvarliga kroppsskador och dödsfall och/eller ogiltigförklara din garanti.



Vårt starka utbud av varumärken:

**CADDY ERICO HOFFMAN ILSCO SCHROFF TRACHTE**