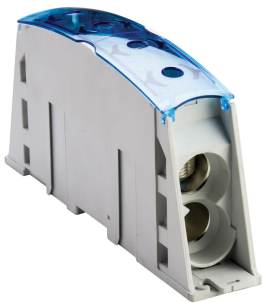


Power Block, 2 Cables-2 Cables, 1,000 A IEC, Aluminum

Data Solutions

NUMĂR DE CATALOG

SB2C2C1000AL



nVent ERIFLEX Power Blocks are the main DIN mounted output/input devices for connection between primary and secondary switchboard, or main input/output connection for machine or industrial equipment (such as inverter, air conditioning machines, etc.). The high short circuit rated large cross section blocks offer time savings and reliability in every panel configuration. The complete Power Blocks range offers multiple connection types with up to four cables, nVent ERIFLEX Flexibar Advanced, or IBSB Advanced power braids.

CERTIFICATIONS



CARACTERISTICI

Can be connected with round cross section cable or flat connection system like nVent ERIFLEX Flexibar Advanced or IBSB Advanced Insulated Braided Conductor

Compact power block with high short circuit current rating

Tinned copper or aluminum block allows for copper or aluminum conductor direct connections, or using ferrule

Screw retaining cover is hinged and removable

Design allows for visual inspection of conductor and confirmation of connection

Modular snap-together blocks for building multi-pole power blocks

Easily clips onto DIN rail or mounts to panel with screws

Voltage detection and measurement connection

95% fill ratio

RoHS compliant

Conforms to EN 45545 obtaining an HL3 classification for chapter R23 and HL2 classification for chapter R22

Halogen free plastic housing excluding the blue protection cover

ATTRIBUTE PRODUS

Article Number: 561175

Finish: Tinned

Type: 2 Cables-2 Cables

Typical Application Current Rating, IEC: 1000A

Material: Aluminiu; Thermoplastic

Line Side Max Conductor Size, IEC: (2) 300 mm²

Load Side Max Conductor Size, IEC: (2) 300 mm²

Short Term Withstand Current (I_{cw}) 1s: 72kA

Max Current Rating, IEC: 1150A

Max Current Rating, UL/CSA: 840A

Peak Short Circuit Current (I_{pk}): 75kA

Rated Conditional Short-Circuit Current (I_{cc}): 35.7kA

Short Circuit Current Rating (SCCR): 100kA

Max Working Voltage, IEC (U_i): 1000; 1500

Max Working Voltage, UL (V_{in}): 1000

Line Side Number of Connections: 2

Line Side Compact Stranded Wire Size: #2 - 600 kcmil; 35 - 300 mm²

Line Side DLO Wire Size: #2 - 373 kcmil

Load Side Compact Stranded Wire Size: (2) 35 - 300 mm²

Load Side DLO Wire Size: #2 - 373 kcmil

Load Side Number of Connections: 2

Load Side Stranded Wire Size - Ferrule: (2) 35 - 300 mm²

Load Side Wire Size: (2) #2 - 600 kcmil

Depth (D): 110mm

Height (H): 223mm

Width (W): 44mm

Unit Weight: 0.72kg

Certification Details: UL® 1953

Complies With: IEC® 60947-7-1

Enclosure Rating: IP 20

Flammability Rating: UL® 94V-0

DETALII SUPLIMENTARE DESPRE PRODUS

SBF250 is UL® 1953 Listed when used with SB250SPCR. Max Working Voltage for UL 1953 applications is 1250 VAC/DC.

Blue protection cover is less than 7% of the overall product weight.

Design Guideline for Distribution Blocks, Power Blocks and Power Terminals										
Derating according to Ambient* Temperature (°C) to maintain working temperature of 85°C										
Ambient Temperature (°C)	30°	35°	40°	45°	50°	55°	60°	65°	70°	75°
Derating Coefficient (d)	1	1	1	0.94	0.88	0.82	0.75	0.67	0.58	0.47
*environment around the terminal blocks inside the enclosure										

DIAGRAMS



AVERTIZARE

Produsele nVent trebuie instalate și utilizate numai așa cum este indicat în fișele de instrucțiuni și materialele de formare ale nVent. Fișele de instrucțiuni sunt disponibile pe www.nvent.com și de la reprezentantul dvs. de servicii clienți nVent. O instalare incorectă, o utilizare abuzivă, o aplicare greșită sau orice altă lipsă de respectare completă a instrucțiunilor și avertismentelor nVent poate duce la defectarea produsului, la deteriorarea proprietății, la răniri corporale grave și moarte și/sau poate anula garanția dvs.



Portofoliul nostru puternic de mărci:

CADDY ERICO HOFFMAN ILSCO SCHROFF TRACHTE