

# FleXbus Conductor Rep, 545 mm<sup>2</sup>, 17000 mm x 25 mm x 12,5 mm x 44 kg

## Data Solutions

### NÚMERO DE CATÁLOGO

### FLEXCORE545L17



The nVent ERIFLEX FleXbus Conductor with Rodent and Termite Repellent is designed for easy, one-sided use with a direct connection to a busbar or circuit-breaker palm. This innovative and patented solution provides a reliable connection between two pieces of electrical equipment, such as a transformer, switchboard, or generator. The FleXbus Advanced solution ensures high reliability and offers a customizable on-site connection without the need for additional design studies, specialized workforce, or expensive tools. The FleXbus Conductor is insulated with a low-smoke, halogen-free, flame-retardant (LSHFRR), high-temperature, and class II material. It is a flexible, copper-plated, aluminum flat braid available in lengths from 2 to 25 meters and in various cross sections for 500A to 6300A applications. This conductor allows for connection from the power supply to switchgear with only one conductor per phase up to 1600kVA and with two conductors per phase up to 3150kVA.

### CERTIFICATIONS



### CARACTERÍSTICAS

Flexible, insulated, copper-plated aluminum flat braid

Better current/ampacity compared to cable due to the skin effect

Significantly more flexible than cable

No need to adhere to a bending radius

Ready-to-use from one side with a direct connection to a busbar or circuit breaker palm

Requires only one conductor per phase for 400kVA (560 A) to 1600kVA (2250 A) and two conductors per phase for 2000kVA (2800 A) to 3150kVA (4435 A)

Insulation sleeve contains a special additive that makes the Flexbus conductor resistant to rodents and termites

## CARACTERÍSTICAS DO PRODUTO

---

Número do artigo: 508463

Corte transversal: 545mm<sup>2</sup>

Comprimento 1 (L1): 17000mm

Comprimento 2 (L2): 50mm

Conductor Material: Copper Clad Aluminum

Insulation Material: Elastômero Termoplástico

Rodent & Termite Proof: Tested as per GB/T 34016-2017 & DIN EN 117

Connector Finish: Tinned

Connector Material: Copper

Insulation Elongation: 500% min

Espessura do isolamento: 2.5 – 3.5mm

Halogen Free Rating: UL® 2885; IEC® 60754-1; IEC® 62821-2

Mechanical Resistance Rating: IK09

UV Resistance Rating: UL® 2556; UL® 854

Low Smoke Rating: IEC® 61034-2; ISO 5659-2; UL® 2885

Rigidez dielétrica: 20kV/mm

Flammability Rating: UL® 94V-0

Diâmetro do fio: 0.2mm

Nominal Voltage, IEC: 1000V; 5000V

Max Working Voltage, EN 50264-3-1: 6000V

Temperatura de trabalho: -50 to 115°C

Em conformidade com: IEC® 60695-2-11 (Glow Wire Test 960 °C); IEC® 61439.1; IEC® 61439.1 Class II; IEC® 60364

ΔT 60 K: 1127A

Largura 1 (W1): 58mm

Largura 2 (W2): 50mm

Altura 1 (H1): 31.7mm

Altura 2 (H2): 18mm

Tamanho do orifício (HS): 11mm

Peso unitário: 43.7kg

A: 25mm

C: 25mm

D: 12.5mm

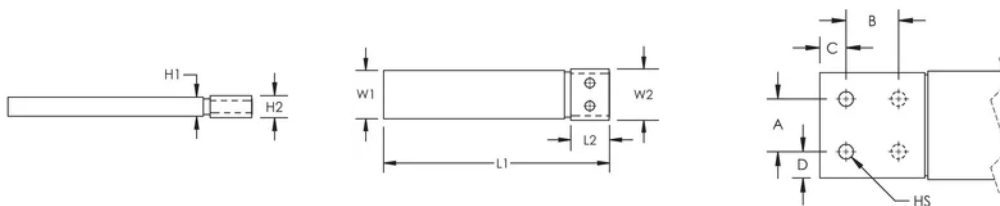
2 Bar Current Coefficient, Non-Symmetric: 1.51

Installation Standard: AS 3008; BS 7671; CEI 64-8; CSN; DIN VDE 0100; HD 384; IEC® 60364; NBR 5410; NEN 1010; NFC 15-100; NIBT-NIN; NP (2002); ÔNORM; REBT; RGIE-AREI

## DETALHES ADICIONAIS DO PRODUTO

Optional extender available for more connection possibilities.

## DIAGRAMAS



## AVISO

Os produtos nVent devem ser instalados e utilizados apenas conforme indicado nas fichas de instrução do produto e materiais de treinamento da nVent. As fichas de instrução estão disponíveis em [www.nVent.com](http://www.nVent.com) e com nossos representantes de atendimento ao cliente nVent. A instalação inadequada, uso incorreto, aplicação incorreta ou outra falha qualquer em seguir completamente as instruções e avisos da nVent podem levar ao mau funcionamento do produto, danos à propriedade, lesões corporais graves e morte, e/ou anular sua garantia.



O nosso forte portefólio de marcas:

**CADDY ERICO HOFFMAN ILSCO SCHROFF TRACHTE**