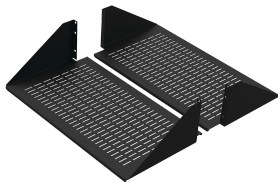


# Double-Sided Steel Vented Shelf, fits 19-in LAN R, Black, Steel

## Data Solutions

### CATALOG NUMBER

**ESHDV19**



The Double-Sided Steel Vented Shelf mounts to both the front and rear flanges of an open-frame rack. It consists of two shelves mounted on each side of the open-frame rack to form a double-sided shelf. It allows more airflow than the steel and aluminum versions. The load rating is 300 lb. (136.1 kg) total.

### FEATURES

The Double-Sided Steel Vented Shelf mounts to both the front and rear flanges of an open-frame rack

It consists of two shelves mounted on each side of the open-frame rack to form a double-sided shelf

It allows more airflow than the steel and aluminum versions

The load rating is 300 lb. (136.1 kg) total

### PRODUCT ATTRIBUTES

Article Number: 21849

Material: Mild Steel

Finish: Powder Coated

Color: Jet Black

Color Code: RAL 9005

Thickness: 16ga

Rack Units: 3U

Height: 4.85in

Width: 19in

Depth: 10.5in

Weight: 10.5lb

Rack Width: 19in

## WARNING

---

nVent products shall be installed and used only as indicated in nVent's product instruction sheets and training materials. Instruction sheets are available at [www.nvent.com](http://www.nvent.com) and from your nVent customer service representative. Improper installation, misuse, misapplication or other failure to completely follow nVent's instructions and warnings may cause product malfunction, property damage, serious bodily injury and death and/or void your warranty.



Our powerful portfolio of brands:

**CADDY ERICO HOFFMAN ILSCO SCHROFF TRACHTE**