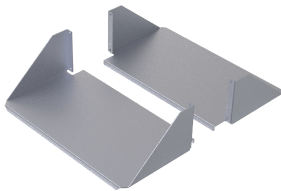


# Double-Sided Solid Shelf 4U, Brushed, Aluminum

## Data Solutions

### CATALOG NUMBER

**ESHDA19**



The Double-Sided Solid Aluminum Shelf mounts on 19-in. open frame rack. It consists of two shelves mounted on each side of the open-frame rack to form a double-sided shelf. It is a lighter weight solution compared to the steel version. This system uses 4U rack space and the maximum load rating is 100 lb. (45.4 kg) per side, 200 lb. (90.7 kg) total.

### FEATURES

The Double-Sided Solid Aluminum Shelf mounts on 19-in. open frame rack

It consists of two shelves mounted on each side of the open-frame rack to form a double-sided shelf

It is a lighter weight solution compared to the steel version

This system uses 4U rack space and the maximum load rating is 100 lb. (45.4 kg) per side, 200 lb. (90.7 kg) total

### PRODUCT ATTRIBUTES

Article Number: 10248

Material: Aluminum

Finish: Brushed

Thickness: 0.09in

Rack Units: 4U

Height: 5.62in

Width: 19.31in

Depth: 9.37in

Includes: 2 Shelves

Weight: 7.48lb

Rack Width: 19in

## **WARNING**

---

nVent products shall be installed and used only as indicated in nVent's product instruction sheets and training materials. Instruction sheets are available at [www.nvent.com](http://www.nvent.com) and from your nVent customer service representative. Improper installation, misuse, misapplication or other failure to completely follow nVent's instructions and warnings may cause product malfunction, property damage, serious bodily injury and death and/or void your warranty.



Our powerful portfolio of brands:

**CADDY   ERICO   HOFFMAN   ILSCO   SCHROFF   TRACHTE**