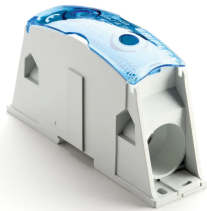


Splice Block, Cable-Cable, 335 A UL, Aluminum

Data Solutions

CATALOG NUMBER

SB400AL



nVent ERIFLEX Power Blocks are the main DIN mounted output/input devices for connection between primary and secondary switchboard, or main input/output connection for machine or industrial equipment (such as inverter, air conditioning machines, etc.). The high short circuit rated large cross section blocks offer time savings and reliability in every panel configuration. The complete Power Blocks range offers multiple connection types with up to four cables, nVent ERIFLEX Flexibar Advanced, or IBSB Advanced power braids.

CERTIFICATIONS



FEATURES

Can be connected with round cross section cable or flat connection system like nVent ERIFLEX Flexibar Advanced or IBSB Advanced Insulated Braided Conductor

Compact power block with high short circuit current rating

Tinned copper or aluminum block allows for copper or aluminum conductor direct connections, or using ferrule

Screw retaining cover is hinged and removable

Design allows for visual inspection of conductor and confirmation of connection

Modular snap-together blocks for building multi-pole power blocks

Easily clips onto DIN rail or mounts to panel with screws

Voltage detection and measurement connection

95% fill ratio

RoHS compliant

Conforms to EN 45545 obtaining an HL3 classification for chapter R23 and HL2 classification for chapter R22

Halogen free plastic housing excluding the blue protection cover

PRODUCT ATTRIBUTES

Article Number: 561164

Finish: Tinned

Type: Cable-Cable

Typical Application Current Rating, UL: 335A

Material: Aluminum; Thermoplastic

Line Side Max Conductor Size, UL: 400 kcmil

Load Side Max Conductor Size, UL: 400 kcmil

Short Term Withstand Current (I_{cw}) 1s: 28.8kA

Max Current Rating, IEC: 610A

Max Current Rating, UL/CSA: 335A

Peak Short Circuit Current (I_{pk}): 51kA

Rated Conditional Short-Circuit Current (I_{cc}): 24.3kA

Short Circuit Current Rating (SCCR): 100kA

Max Working Voltage, IEC (U_i): 1000; 1500

Max Working Voltage, UL (V_{in}): 1250

Line Side Number of Connections: 1

Line Side Compact Stranded Wire Size: 95 - 240 mm²; 3/0 - 400 kcmil

Load Side Compact Stranded Wire Size: 95 - 240 mm²; 3/0 - 400 kcmil

Load Side Number of Connections: 1

Load Side Stranded Wire Size - Ferrule: 95 - 240 mm²

Depth (D): 3.23in

Height (H): 5.76in

Width (W): 1.63in

Unit Weight: 0.55lb

Certification Details: UL® 1059

Complies With: IEC® 60947-7-1

Enclosure Rating: IP 20

Flammability Rating: UL® 94V-0

ADDITIONAL PRODUCT DETAILS

SBF250 is UL® 1953 Listed when used with SB250SPCR. Max Working Voltage for UL 1953 applications is 1250 VAC/DC.

Blue protection cover is less than 7% of the overall product weight.

Design Guideline for Distribution Blocks, Power Blocks and Power Terminals

Derating according to Ambient* Temperature (°F) to maintain working temperature of 185°F

Ambient Temperature (°F)	86°	95°	104°	113°	122°	131°	140°	149°	158°	167°
Derating Coefficient (d)	1	1	1	0.94	0.88	0.82	0.75	0.67	0.58	0.47

*environment around the terminal blocks inside the enclosure

DIAGRAMS



WARNING

nVent products shall be installed and used only as indicated in nVent's product instruction sheets and training materials. Instruction sheets are available at www.nvent.com and from your nVent customer service representative. Improper installation, misuse, misapplication or other failure to completely follow nVent's instructions and warnings may cause product malfunction, property damage, serious bodily injury and death and/or void your warranty.



Our powerful portfolio of brands:

CADDY ERICO HOFFMAN ILSCO SCHROFF TRACHTE