

FleXbus HCBC Plate, 1.969" x 1.26"

Data Solutions

CATALOG NUMBER

FLEXPLATE50



CERTIFICATIONS



FEATURES

Rigid tinned copper part provides strong electrical contact to maintain braid expansion during compression

HCBC Plate allows FleXbus Conductor insulation to overlap the connection palm

Tinned copper allows for copper or aluminum conductor connections

Installs quickly and easily

RoHS compliant

PRODUCT ATTRIBUTES

Article Number: 508180

Material: Copper

Finish: Tinned

A: 2.56in

B: 2.48in

C: 1.77in

D: 1.61in

Thickness (T): 0.2in

Conductor Size: 220 mm²; 360 mm²; 545 mm²; 640 mm²

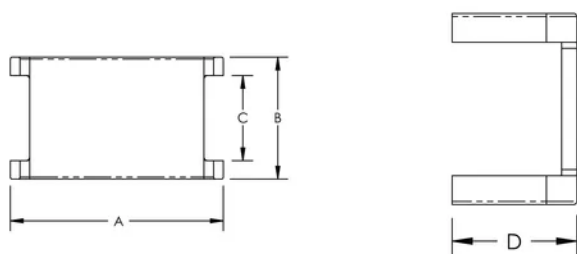
Unit Weight: 0.35lb

ADDITIONAL PRODUCT DETAILS

It is mandatory to use the HCBC Clamp associated with the HCBC Plate for proper Flexbus Conductor connection.

It is mandatory to use the PIN associated with the HCBC Plate for proper connection mechanical resistance.

DIAGRAMS



WARNING

nVent products shall be installed and used only as indicated in nVent's product instruction sheets and training materials. Instruction sheets are available at www.nvent.com and from your nVent customer service representative. Improper installation, misuse, misapplication or other failure to completely follow nVent's instructions and warnings may cause product malfunction, property damage, serious bodily injury and death and/or void your warranty.



Our powerful portfolio of brands:

CADDY ERICO HOFFMAN ILSCO SCHROFF TRachte