

FleXbus Extender Type 2 Flat and Plain, 220 mm², 360 mm², 545 mm²

Data Solutions

CATALOG NUMBER

FLEXEXT50A2



CERTIFICATIONS



FEATURES

Designed to extend the FleXbus Conductors

Delivered with the appropriate countersunk head screws, nuts and washers

PRODUCT ATTRIBUTES

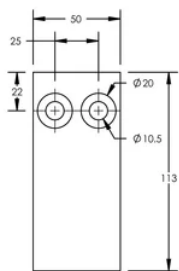
Article Number: 508111

Material: Copper

Conductor Size: 220 mm²; 360 mm²; 545 mm²

Unit Weight: 1.22lb

DIAGRAMS



WARNING

nVent products shall be installed and used only as indicated in nVent's product instruction sheets and training materials. Instruction sheets are available at www.nvent.com and from your nVent customer service representative. Improper installation, misuse, misapplication or other failure to completely follow nVent's instructions and warnings may cause product malfunction, property damage, serious bodily injury and death and/or void your warranty.



Our powerful portfolio of brands:

CADDY ERICO HOFFMAN ILSCO SCHROFF TRACHTE