

# Multi Attachment



## CERTIFICATIONS



## FEATURES

Disperses load over two anchors

Minimizes the number of installed braces needed for concrete and wood structures

Ideal for deck installations

Use for both lateral and longitudinal sway brace applications

Meets NFPA®-13 requirements for seismic sway bracing

Meets CEN/TS 17551:2021 requirements for Seismic Sway Bracing

## SPECIFICATIONS

**Finish:** Electrogalvanized

**Material:** Steel

Table 1/1

Catalog Number	Hole Size 1 (HS1)	Hole Size 2 (HS2)	A	B	C	D
CSBMA050050 EG	9/16"	9/16"	12"	2 1/2"	2 1/2"	9"

Catalog Number	Hole Size 1 (HS1)	Hole Size 2 (HS2)	A	B	C	D
CSBMA050075 EG	13/16"	9/16"	12"	2 1/2"	2 1/2"	9"

## ADDITIONAL PRODUCT DETAILS

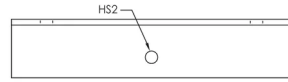
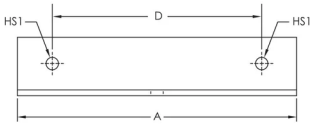
Mount to structure using holes indicated in HS1.

Structure Attachment and Brace Member are not included.

UL Loads				
Part Number	Structure Attachment Fitting	Brace Member	Load Rating	
CSBMA050050	CSBU1	1" - 2" Sch. 40 NPS	680 lb	
	CSBUNIV050	1" - 2" Sch. 40 NPS	680 lb	
	CSBURC12	CSB12CBL	418 lb	
		CSB18CBL	772 lb	
		CSB36CBL	1100 lb	
	CSBNPC12	CSB12CBL	418 lb	
		CSB18CBL	772 lb	
		CSB36CBL	1300 lb	
	CSBMA050075	CSBU1	1" - 2" Sch. 40 NPS	680 lb
		CSBUNIV050	1" - 2" Sch. 40 NPS	680 lb
CSBURC12		CSB12CBL	418 lb	
		CSB18CBL	772 lb	
		CSB36CBL	1100 lb	
CSBNPC12		CSB12CBL	418 lb	
		CSB18CBL	772 lb	
		CSB36CBL	1300 lb	

FM Loads				
Part Number	Horizontal Capacity per Installation Angle from Vertical			
	30° - 44°	45° - 59°	60° - 74°	75° - 90°
CSBMA050050EG	3,290 lb	4,520 lb	5,540 lb	6,200 lb
CSBMA050075EG	3,290 lb	4,520 lb	5,540 lb	6,200 lb

## DIAGRAMS



## WARNING

nVent products shall be installed and used only as indicated in nVent's product instruction sheets and training materials. Instruction sheets are available at [www.nvent.com](http://www.nvent.com) and from your nVent customer service representative. Improper installation, misuse, misapplication or other failure to completely follow nVent's instructions and warnings may cause product malfunction, property damage, serious bodily injury and death and/or void your warranty.

### North America

+1.800.753.9221

Option 1 – Customer Care

Option 2 – Technical

Support

### Europe

Netherlands:

+31 800-0200135

France:

+33 800 901 793

### Europe

Germany:

800 1890272

Other Countries:

+31 13 5835404

### APAC

Shanghai:

+ 86 21 2412 1618/19

Sydney:

+61 2 9751 8500



Our powerful portfolio of brands:

**CADDY**

**ERICO**

**HOFFMAN**

**ILSCO**

**SCHROFF**

**TRACHTE**

