

# Two Hole Flat Bracket



## FEATURES

Used to create metal frames with nVent CADDY Eristrut channels

## SPECIFICATIONS

**Finish:** Hot-Dip Galvanized

**Material:** Steel

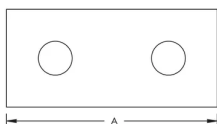
Table 1/2

| Catalog Number | Article Number | A     | Hole Size (HS) | Thickness (T) | Screw Diameter (Sc) | Screw Length (L) |
|----------------|----------------|-------|----------------|---------------|---------------------|------------------|
| ZE102          | 313020         | 83 mm | 14             | 6             | 10                  | 25mm             |
| ZEA102         | 387520         | 83 mm | 14             | 6             |                     |                  |

Table 2/2

| Catalog Number | Article Number | Screw Included |
|----------------|----------------|----------------|
| ZE102          | 313020         | Yes            |
| ZEA102         | 387520         | No             |

## DIAGRAMS



## WARNING

---

nVent products shall be installed and used only as indicated in nVent's product instruction sheets and training materials. Instruction sheets are available at [www.nvent.com](http://www.nvent.com) and from your nVent customer service representative. Improper installation, misuse, misapplication or other failure to completely follow nVent's instructions and warnings may cause product malfunction, property damage, serious bodily injury and death and/or void your warranty.

### North America

+1.800.753.9221

Option 1 – Customer Care

Option 2 – Technical

Support

### Europe

Netherlands:

+31 800-0200135

France:

+33 800 901 793

### Europe

Germany:

800 1890272

Other Countries:

+31 13 5835404

### APAC

Shanghai:

+ 86 21 2412 1618/19

Sydney:

+61 2 9751 8500



Our powerful portfolio of brands:

**CADDY**

**ERICO**

**HOFFMAN**

**ILSCO**

**SCHROFF**

**TRACHTE**

