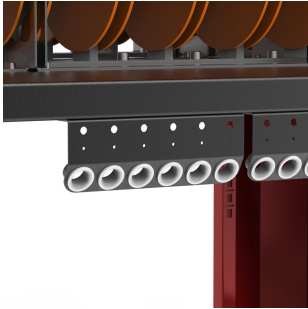


## Cable guidance bracket, CSB02



Mild steel brackets help you organize and route wiring equipment in a secure, controlled cable management system to optimize the performance of your wire processing machine. The cable guidance bracket can guide up to six cables, and can be installed directly on the CS1000 Cable Storage Frame.

### FEATURES

---

Description: These mild steel brackets can be fitted directly onto the CS1000 Cable Storage Frame, and can guide up to six cables per bracket.

Pack quantity: 1 piece (Scope of delivery: Cable guidance bracket 1 piece; Cable guides 6 pieces.)

Material: Mild steel; RAL 7024 powder coating

## SPECIFICATIONS

Table 1/1

Catalog Number	Height	Width	Depth	Product Family	Material	Finish
CSB02	65mm	180mm	25mm	Panel Shop Automation	Mild Steel	Powder Coated

## WARNING

nVent products shall be installed and used only as indicated in nVent's product instruction sheets and training materials. Instruction sheets are available at [www.nvent.com](http://www.nvent.com) and from your nVent customer service representative. Improper installation, misuse, misapplication or other failure to completely follow nVent's instructions and warnings may cause product malfunction, property damage, serious bodily injury and death and/or void your warranty.



Our powerful portfolio of brands:

**CADDY ERICO HOFFMAN ILSCO SCHROFF TRACHTE**