

# Two Hole Flat Bracket



## FEATURES

Used to create metal frames with nVent CADDY Eristrut channels

## SPECIFICATIONS

Table 1/2

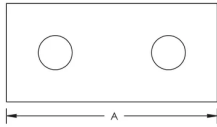
Catalog Number	Article Number	Material	Finish	A	Hole Size (HS)	Thickness (T)
ZEA102	387520	Steel	Hot-Dip Galvanized	83 mm	14	6
ZE102	313020	Steel	Hot-Dip Galvanized	83 mm	14	6
ZEA102S6	387522	Stainless Steel 316 (EN 1.4401)		83 mm	14	6

Table 2/2

Catalog Number	Article Number	Screw Diameter (Sc)	Screw Length (L)	Screw Included
ZEA102	387520			No
ZE102	313020	10	25mm	Yes
ZEA102S6	387522			No

## DIAGRAMS

---



## WARNING

---

nVent products shall be installed and used only as indicated in nVent's product instruction sheets and training materials. Instruction sheets are available at [www.nvent.com](http://www.nvent.com) and from your nVent customer service representative. Improper installation, misuse, misapplication or other failure to completely follow nVent's instructions and warnings may cause product malfunction, property damage, serious bodily injury and death and/or void your warranty.

### North America

+1.800.753.9221

Option 1 – Customer Care

Option 2 – Technical

Support

### Europe

Netherlands:

+31 800-0200135

France:

+33 800 901 793

### Europe

Germany:

800 1890272

Other Countries:

+31 13 5835404

### APAC

Shanghai:

+ 86 21 2412 1618/19

Sydney:

+61 2 9751 8500



Our powerful portfolio of brands:

**CADDY**

**ERICO**

**HOFFMAN**

**ILSCO**

**SCHROFF**

**TRACHTE**

