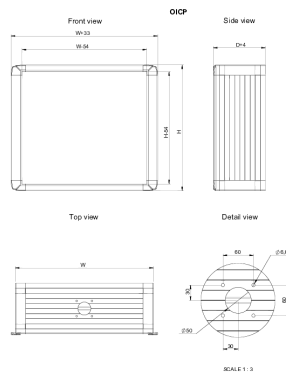
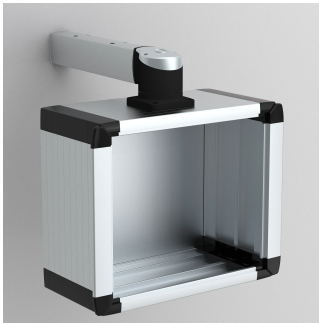


# Operator Interface Control Panel, OICP



The aluminium operator interface control panel, OICP, has a pre-machined hole pattern to allow for the desired fixation to a swing arm, plus a removable front plate at a IP 65 protection degree. Components can be easily fitted thanks to the removable front plate, but will also be easily accessible through a removable rear panel. Side handles on the enclosure allow for easy movement of the enclosure into the desired working position. The aluminium body will dissipate more heat than a mild steel body, which may eliminate the need for additional ventilation.

## INDUSTRY STANDARDS

CE UKCA

GOST

## FEATURES

Material: Body: Al Mg Si05. Rear plate: Al Mg. Corners: AISI 12.

Protection: IP 65.

Finish: Body and rear plate: anodised aluminium. Corners: RAL 7016.

Mounting requirements: OIFP front panel is not included in the standard delivery and needs to be ordered separately.

Delivery: Body, screwed rear plate, front plate mounting kit, and mounting accessories.

## SPECIFICATIONS

---

|                    |                 |
|--------------------|-----------------|
| <b>Material:</b>   | Aluminum        |
| <b>Color:</b>      | Anthracite Gray |
| <b>Finish:</b>     | Powder Coated   |
| <b>Color Code:</b> | RAL 7016        |

Table 1/1

| Catalog Number | Height | Width | Depth | Weight |
|----------------|--------|-------|-------|--------|
| OICP343920     | 345mm  | 395mm | 200mm | 7kg    |
| OICP395220     | 398mm  | 525mm | 200mm | 9kg    |
| OICP305220     | 309mm  | 525mm | 200mm | 7.9kg  |
| OICP355220     | 345mm  | 525mm | 200mm | 8.3kg  |
| OICP495420     | 495mm  | 542mm | 200mm | 10.3kg |
| OICP414720     | 415mm  | 470mm | 200mm | 8.5kg  |

## ADDITIONAL PRODUCT DETAILS

---

The external enclosure dimension is increased by 16.5 mm, on the side where there is a grip profile.

## WARNING

---

nVent products shall be installed and used only as indicated in nVent's product instruction sheets and training materials. Instruction sheets are available at [www.nvent.com](http://www.nvent.com) and from your nVent customer service representative. Improper installation, misuse, misapplication or other failure to completely follow nVent's instructions and warnings may cause product malfunction, property damage, serious bodily injury and death and/or void your warranty.



Our powerful portfolio of brands:

**CADDY ERICO HOFFMAN ILSCO SCHROFF TRACHTE**