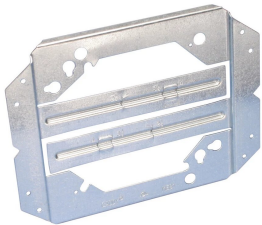


# "Mounts Electrical Boxes" Bracket



## CERTIFICATIONS



## FEATURES

Design simplifies handling, reduces inventory and saves space

Requires only a screw gun to install

V-notched on center allows for consistent positioning

Built-in support legs reduce box movement

Can be used with EMT; ideal for flexible conduit, MC/AC or non-metallic sheathed cable

Can be pre-assembled in the shop to allow for greater efficiency at the job site

Plaster rings can be mounted separately eliminating the need for an electrical box for low-voltage applications

MP Series brackets can be attached in-line to the MEB1 for low voltage applications

Mounts on either side of stud without need to reposition box

## SPECIFICATIONS

Table 1/1

Catalog Number	Material	Finish	Stud Wall Depth
MEB1	Steel	Pregalvanized	63.5mm, 88.9mm, 101.6mm

## WARNING

---

nVent products shall be installed and used only as indicated in nVent's product instruction sheets and training materials. Instruction sheets are available at [www.nvent.com](http://www.nvent.com) and from your nVent customer service representative. Improper installation, misuse, misapplication or other failure to completely follow nVent's instructions and warnings may cause product malfunction, property damage, serious bodily injury and death and/or void your warranty.

### North America

+1.800.753.9221

Option 1 – Customer Care

Option 2 – Technical

Support

### Europe

Netherlands:

+31 800-0200135

France:

+33 800 901 793

### Europe

Germany:

800 1890272

Other Countries:

+31 13 5835404

### APAC

Shanghai:

+ 86 21 2412 1618/19

Sydney:

+61 2 9751 8500



Our powerful portfolio of brands:

**CADDY ERICO HOFFMAN ILSCO SCHROFF TRACHTE**

