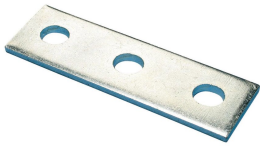


# Three Hole Flat Bracket



## FEATURES

Used to create metal frames with nVent CADDY Eristrut channels

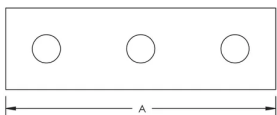
## SPECIFICATIONS

**Material:** Steel

Table 1/1

| Catalog Number | Article Number | Finish             | Hole Size (HS) | Thickness (T) | A      |
|----------------|----------------|--------------------|----------------|---------------|--------|
| ZEA103         | 387530         | Hot-Dip Galvanized | 14 mm          | 6 mm          | 136 mm |
| ZEA103EG       | 387531         | Electrogalvanized  | 14 mm          | 6 mm          | 100 mm |

## DIAGRAMS



## WARNING

nVent products shall be installed and used only as indicated in nVent's product instruction sheets and training materials. Instruction sheets are available at [www.nvent.com](http://www.nvent.com) and from your nVent customer service representative. Improper installation, misuse, misapplication or other failure to completely follow nVent's instructions and warnings may cause product malfunction, property damage, serious bodily injury and death and/or void your warranty.

**North America**

+1.800.753.9221

Option 1 – Customer Care

Option 2 – Technical

Support

**Europe**

Netherlands:

+31 800-0200135

France:

+33 800 901 793

**Europe**

Germany:

800 1890272

Other Countries:

+31 13 5835404

**APAC**

Shanghai:

+ 86 21 2412 1618/19

Sydney:

+61 2 9751 8500



Our powerful portfolio of brands:

**CADDY ERICO HOFFMAN ILSCO SCHROFF TRACHTE**

