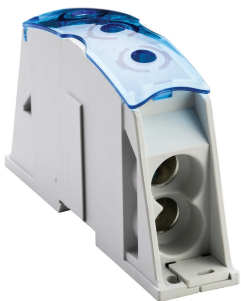


Power Block, Flexibar-2 Cables, 400 A - IEC, Copper

Data Solutions

KATALOGNUMMER

SBF2C250



nVent ERIFLEX Power Blocks are the main DIN mounted output/input devices for connection between primary and secondary switchboard, or main input/output connection for machine or industrial equipment (such as inverter, air conditioning machines, etc.). The high short circuit rated large cross section blocks offer time savings and reliability in every panel configuration. The complete Power Blocks range offers multiple connection types with up to four cables, nVent ERIFLEX Flexibar Advanced, or IBSB Advanced power braids.

CERTIFICERINGER



FUNKTIONER

Can be connected with round cross section cable or flat connection system like nVent ERIFLEX Flexibar Advanced or IBSB Advanced Insulated Braided Conductor

Compact power block with high short circuit current rating

Tinned copper or aluminum block allows for copper or aluminum conductor direct connections, or using ferrule

Screw retaining cover is hinged and removable

Design allows for visual inspection of conductor and confirmation of connection

Modular snap-together blocks for building multi-pole power blocks

Easily clips onto DIN rail or mounts to panel with screws

Voltage detection and measurement connection

95% fill ratio

RoHS compliant

Conforms to EN 45545 obtaining an HL3 classification for chapter R23 and HL2 classification for chapter R22

Halogen free plastic housing excluding the blue protection cover

PRODUKTEGENSKABER

Artikelnummer: 561172

Finish: Tinned

Type: Flexibar-2 Cables

Typical Application Current Rating, IEC: 400A

Materiale: Copper; Thermoplastic

Line Side Max Conductor Size, IEC: 70 mm²

Load Side Max Conductor Size, IEC: (2) 120 mm²

Short Term Withstand Current (I_{cw}) 1s: 14.4kA

Max Current Rating, Insulated Power Braid, IEC: 430A

Max Current Rating, nVent ERIFLEX Flexibar, IEC: 500A

Max Current Rating, UL/CSA: 255A

Peak Short Circuit Current (I_{pk}): 42kA

Rated Conditional Short-Circuit Current (I_{cc}): 20kA

Short Circuit Current Rating (SCCR): 100kA

Max Working Voltage, IEC (U_i): 1000; 1500

Max Working Voltage, UL (V_{in}): 1000

Line Side Number of Connections: 1

Line Side Insulated Power Braid Cross Section: 50mm²; 70mm²

Line Side nVent ERIFLEX Flexibar Size: 2X20X1 - 5X20X1

Line Side DLO Wire Size: #6 - 2/0

Load Side Compact Stranded Wire Size: (2) 35 - 120 mm²

Load Side Number of Connections: 2

Load Side Stranded Wire Size - Ferrule: (2) 35 - 120 mm²

Load Side Wire Size: (2) #6 - 250 kcmil

Dybde (D): 83mm

Height (H): 148mm

Width (W): 35mm

Unit Weight: 0.5kg

Certification Details: UL® 1953

Complies With: IEC® 60947-7-1

Enclosure Rating: IP 20

Flammability Rating: UL® 94V-0

YDERLIGERE PRODUKTOPLYSNINGER

SBF250 is UL® 1953 Listed when used with SB250SPCR. Max Working Voltage for UL 1953 applications is 1250 VAC/DC.

Blue protection cover is less than 7% of the overall product weight.

Design Guideline for Distribution Blocks, Power Blocks and Power Terminals										
Derating according to Ambient* Temperature (°C) to maintain working temperature of 85°C										
Ambient Temperature (°C)	30°	35°	40°	45°	50°	55°	60°	65°	70°	75°
Derating Coefficient (d)	1	1	1	0.94	0.88	0.82	0.75	0.67	0.58	0.47
*environment around the terminal blocks inside the enclosure										

DIAGRAMS



ADVARSEL

nVent-produkter skal kun installeres og anvendes som angivet i nVents produktvejledninger og træningsmaterialer. Vejledninger er tilgængelige på www.nvent.com og hos din nVent kundeservicerepræsentant. Forkert installation, misbrug, fejlanvendelse eller anden undladelse af fuldt ud at følge nVents instruktioner og advarsler kan medføre funktionsfejl, materielle skader, alvorlige personskader eller død og/eller ugyldiggøre din garanti.



Vores kraftfulde portefølje af mærker:

CADDY ERICO HOFFMAN ILSCO SCHROFF TRACHTE