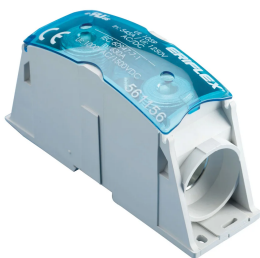


Power Block, Cable-Cable, 630 A IEC, Copper

Data Solutions

KATALOGOVÉ ČÍSLO

SB630



nVent ERIFLEX Power Blocks are the main DIN mounted output/input devices for connection between primary and secondary switchboard, or main input/output connection for machine or industrial equipment (such as inverter, air conditioning machines, etc.). The high short circuit rated large cross section blocks offer time savings and reliability in every panel configuration. The complete Power Blocks range offers multiple connection types with up to four cables, nVent ERIFLEX Flexibar Advanced, or IBSB Advanced power braids.

CERTIFICATIONS



VLASTNOSTI

Can be connected with round cross section cable or flat connection system like nVent ERIFLEX Flexibar Advanced or IBSB Advanced Insulated Braided Conductor

Compact power block with high short circuit current rating

Tinned copper or aluminum block allows for copper or aluminum conductor direct connections, or using ferrule

Screw retaining cover is hinged and removable

Design allows for visual inspection of conductor and confirmation of connection

Modular snap-together blocks for building multi-pole power blocks

Easily clips onto DIN rail or mounts to panel with screws

Voltage detection and measurement connection

95% fill ratio

RoHS compliant

Conforms to EN 45545 obtaining an HL3 classification for chapter R23 and HL2 classification for chapter R22

Halogen free plastic housing excluding the blue protection cover

VLASTNOSTI PRODUKTU

Article Number: 561156

Povrchová úprava: Tinned

Typ: Cable-Cable

Typical Application Current Rating, IEC: 630A

Materiál: Copper; Thermoplastic

Line Side Max Conductor Size, IEC: 500 mm²

Load Side Max Conductor Size, IEC: 500 mm²

Short Term Withstand Current (I_{cw}) 1s: 60kA

Max Current Rating, IEC: 870A

Max Current Rating, UL: 545A

Peak Short Circuit Current (I_{pk}): 51kA

Rated Conditional Short-Circuit Current (I_{cc}): 24.3kA

Short Circuit Current Rating (SCCR): 100kA

Max Working Voltage, IEC (U_i): 1000; 1500

Max Working Voltage, UL (V_{in}): 1250

Line Side Number of Connections: 1

Line Side Compact Stranded Wire Size: 240 - 500 mm²; 400 - 1,000 kcmil

Load Side Compact Stranded Wire Size: 240 - 500 mm²; 400 - 1,000 kcmil

Load Side Number of Connections: 1

Load Side Stranded Wire Size - Ferrule: 240 - 500 mm²

Hloubka (D): 89.4mm

Height (H): 174.4mm

Width (W): 54.2mm

Unit Weight: 1.2kg

Certification Details: UL® 1059

Complies With: IEC® 60947-7-1

Enclosure Rating: IP 20

Flammability Rating: UL® 94V-0

DALŠÍ PODROBNOSTI O PRODUKTU

SBF250 is UL® 1953 Listed when used with SB250SPCR. Max Working Voltage for UL 1953 applications is 1250 VAC/DC.

Blue protection cover is less than 7% of the overall product weight.

Design Guideline for Distribution Blocks, Power Blocks and Power Terminals

Derating according to Ambient* Temperature (°C) to maintain working temperature of 85°C

Ambient Temperature (°C)	30°	35°	40°	45°	50°	55°	60°	65°	70°	75°
Derating Coefficient (d)	1	1	1	0.94	0.88	0.82	0.75	0.67	0.58	0.47

*environment around the terminal blocks inside the enclosure

DIAGRAMS



UPOZORNĚNÍ

Produkty nVent musí být instalovány a používány pouze tak, jak je uvedeno v instrukčních listech a materiálech pro školení nVent. Instrukční listy jsou k dispozici na www.nvent.com a od vašeho zástupce zákaznického servisu nVent. Nesprávná instalace, zneužití, nesprávné použití nebo jiný nedostatek úplného dodržování pokynů a varování nVent může způsobit selhání produktu, poškození majetku, vážné zranění osob a smrt a/nebo zrušit vaši záruku.



Naše portfolio silných značek:

CADDY ERICO HOFFMAN ILSCO SCHROFF TRachte